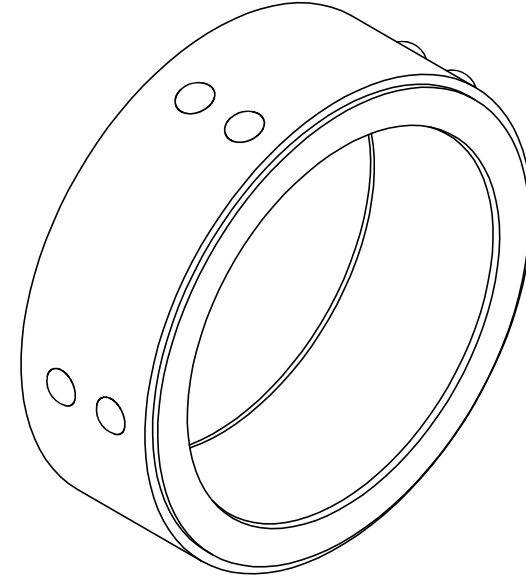
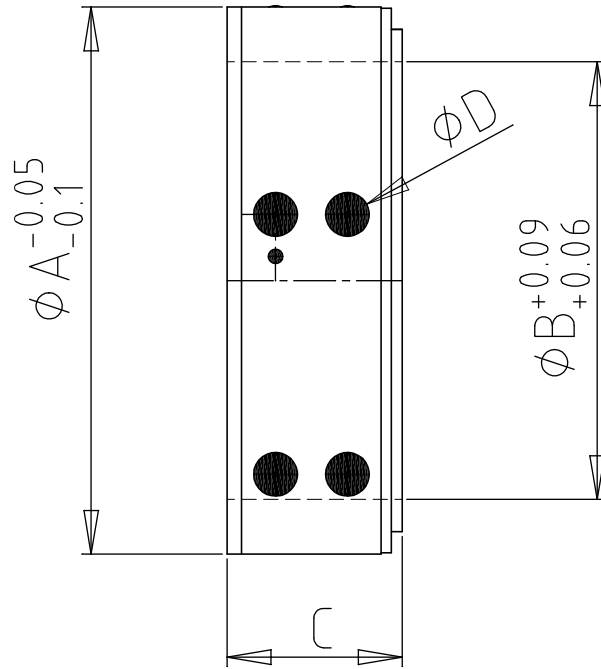


ALBERI FRIZIONATI/DIFFERENTIAL AIRSHAFTS

Diametro interno anime [mm] <i>Core ID [mm]</i>	50.8	70	76.2	152.4
Diametro albero espansibile [mm] <i>Airshaft diameter [mm]</i>	50	69	75	151.5
Numero listelli <i>Number of strips</i>	3	3	3	3
Peso albero perni esclusi [kg per metro] <i>Weight of airshaft not incl. journals [kg per meter]</i>	12	21	24	47
Coppia [kgm per metro] <i>Torque [kgm per meter]</i>	2.1	2.9	3.2	6.4
Pressione di utilizzo consigliata [bar] 1.5 ÷ 6 <i>Recommended pressure [bar] 1.5 ÷ 6</i>				



C.I.D	76-77				152-153			
A	75				151			
B	60				60			
C	19	24	39	49	24	39	49	59
MINIMUM CUT REEL TAGLIO MIN. BOBINA	20	25	40	50	25	40	50	60
COLLAPSED DIAMETER DIAMETRO A RIPOSO	75.3				151.3			
EXPANDED DIAMETER DIAMETRO ESPANSO	78.5				155			
BALL DIAMETER DIAMETRO SFERE	6				7			



UP&DOWN FRICTION RING



PATENT PENDING



NEW



We have developed a special execution of friction rings aiming to improve their use on differential airshafts. The result is an innovative high quality product.

- Cores can be inserted with non-rotating airshaft, without any need to counter-rotate it (in case of manual insertion, there will be no risk of shock for the operator's hand)
- After winding, when rings are at rest, rolls can be extracted without any need to counter-rotate the shaft
- The rings can be used with cardboard, plastic or metal cores (min. ID 40 mm x min. 40 mm wide)
- The lighter weight of rings considerably increases the shaft capacity
- High quality material with anti-wearing and anti-rusting treatments is ensured
- From a minimum width of 15 mm, corresponding to the size of roll, the rings will allow a perfect blocking thanks to their both inline balls
- The minimum compression of the spring will reduce its wearing over the time
- The shape of slots in the upper ring will protect from the entrance of dust and can even allow its ejection

MADE IN ITALY

GERO S.r.l.
Via Belvedere, 54 - 20862 ARCORE (MB) ITALY
Tel. + 39.039.617436 - Fax + 39.039.6775330
e-mail: commerciale@gero.it - www.gero.it



GERO s.r.l. Via Belvedere, 54 - 20862 ARCORE - MB - ITALY
 Tel. : + 39.039.617436 - Fax : + 39.039.6775330
 Partita IVA e Cod. Fisc. : 02494480961
 www.gero.it - e-mail : info@gero.it

SCHEDA TECNICA / TECHNICAL FORM

ALBERI ESPANSIBILI

Società / Company _____ Responsabile / Product Manager _____ Data / Date _____

Indirizzo / Address _____ Tel / Phone _____ Fax _____ E-mail _____

Mandrino Espansibile/ Expanding shaft: Listelli/Strips Chiavette/Keys Frizionato/Differential shaft Tegoli/Leaves

Materiale Mandrino/ Body material: Acciaio/Steed Alluminio/Aluminium Fibra di carbonio/Carbon fibre

Ø interno anima/ Core inside Ø: _____ Materiale anima/ Core material: Cartone/Cardboard Plastica/Plastic Altro/Other

Caratteristiche Bobina/ Features of the roll: _____ L. max/ Max length _____ L. min/ Min length _____ Peso max/ Max weight _____ N° bobine/ # of rolls

Tipo di macchina/ Machine type: _____ Tiro/Tension [Kg/m] _____ Velocità/Speed [m/min] _____ Senso di rotazione/Rotation direction _____

Disegno perno sx/ Left hand journal

Indicare eventuali zone temprate / Please state possible hardened areas

Posizione valvola gonfiaggio/ Position of inflating valve:

A B
 C D

ANNOTAZIONI / NOTES:

Disegno perno dx/ Right hand journal

